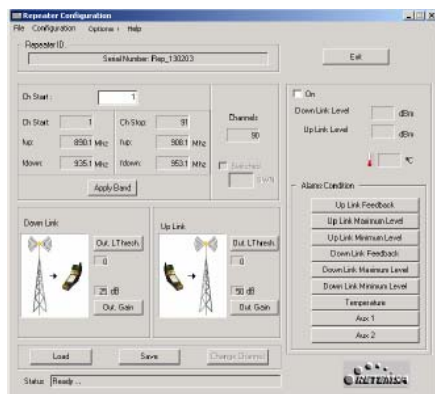




MODEL GSMR7H-XXXC2S
GSM 900 MHz / 33 dBm 2 channels



Great efficiency of coverage outdoor applications.



PC repeater configuration software

PRODUCT DESCRIPTION

RETEMESA's switched repeater allows to have a gain of 15 dB over the isolation between antennas. This new technology solved the isolation problem that arises between antennas installed in the same mast without the use of two repeaters and without any change of frequency.

The systems receives the signal form the BTS, follows open the switch of the input – avoid nay possible loop feedback in the next step of signal amplification and amplified without the nowadays limit of necessary safeguard between the antennas (reception antenna and coverage antenna) reducing to half distance.

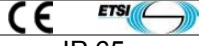
PRODUCT FEATURES

- **SSR Channeled repeater** for GSM 900 MHz systems.
- Full-duplex configuration based on heterodyne structure over 70 MHz
- Output power up to **37 dBm** / 1 channel or 33 dBm / 2 channels.
- Bandwidth 200+200 Khz
- Gain from 75 to 90 dB, adjustable in steps of 1 dB with a Windows ® compatible software.
- Dynamic margins 65 dB
- Automatic Level Control loops to suppress unwanted disturbing radio signals
- Remotely controlled model can be managing with a standard computer and a modem (9600 bauds).
- Windows interface for configuration all parameters: uplink and downlink gain, ALC loops, channels, alarms reports, monitoring in / out levels.

ELECTRICAL SPECIFICATIONS AT Ta=25°C:

Parameters	Test Conditions	Downlink			Uplink			Units
Work Band	At -3 dB	935-960			890-915			MHz
BandWidth	At -3 dB	200			200			KHz
Parameters	Test Conditions	1 CH	2 CH	1 CH	2 CH	Units		
OutPut power	1dB compression	+37	+33	+37	+33	dBm		
Input sat. Level (1 carrier)	1 carrier	-10	-10	-10	-10	dBm		
Out of band gain (Ref: 0 dB)		± 1 MHz			± 2 MHz			
		Min	Typ	Max	Min	Typ	Max	
Uplink			-40			-50		dB
Downlink			-40			-50		dB
Parameters	Minimum	Typical		Maximum			Units	
Uplink Gain (1 dB step, software configurable)	75	85		100			dB	
Downlink Gain (1 dB step, software configurable)	75	85		100			dB	
In Band Ripple		± 1.5					dB	
ALC window		65					dB	
Uplink Excitability		-104					dBm	
Downlink excitability		-104					dBm	
Noise factor		4					dB	
In/Out impedance		50					Ω	
Return losses		-12					dB	
Group Delay		3					μs	
Power supply AC levels	100	220		240			Vac	
Power consumption		80					W	

MECHANICAL AND ENVIRONMENTAL SPECIFICATIONS:

RF connectors	N Female	Other options by demand
MTBF	100.000 Hours	
Temperature range	-35°C to 55° C	IP 65
Package Dimensions (mm)	WxHxD	400x420x220 mm

¹ Factory defaults. Manufactured under ISO 9002.

