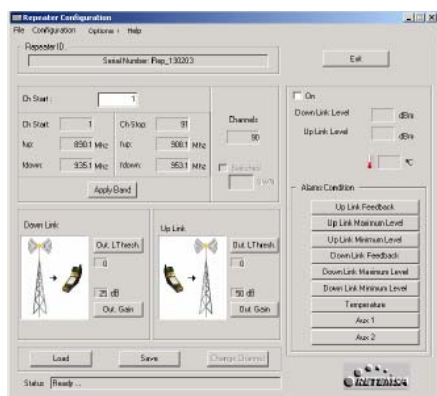




**MODEL DCSR14H-XXXC2T**  
**GSM 1800 MHz / 33 dBm 2 channels**



[Quick deployment and cost effective coverage outdoor applications.](#)



[PC repeater configuration software](#)

### PRODUCT DESCRIPTION

RETEMESA's channeled repeater is a bidirectional superheterodyne receiver / transmitter that has been designed to provide coverage in outdoor areas with low levels of signal.

RETEMESA also has other Standard interfaces like optic fiber or radiating cable to specific applications.

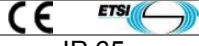
### PRODUCT FEATURES

- **Channeled repeater** for GSM 1800 MHz systems.
- Full-duplex configuration based on heterodyne structure over 140 MHz
- Output power up to **37 dBm** / 1 channel or 33 dBm / 2 channels.
- Bandwidth 200+200 Khz
- Gain from 45 to 90 dB, adjustable in steps of 1 dB with a Windows ® compatible software.
- Dynamic margins 65 dB
- Automatic Level Control loops to suppress unwanted disturbing radio signals
- Remotely controlled model can be managing with a standard computer and a modem (9600 bauds).
- Windows interface for configuration all parameters: uplink and downlink gain, ALC loops, channels, alarms reports, monitoring in / out levels.

## ELECTRICAL SPECIFICATIONS AT Ta=25°C:

Parameters	Test Conditions	Downlink			Uplink			Units
Work Band	At -3 dB	1805-1880			1710-1785			MHz
BandWidth	At -3 dB	200			200			KHz
Parameters	Test Conditions	1 CH	2 CH	1 CH	2 CH	Units		
OutPut power	1dB compression	+37	+33	+37	+33	dBm		
Input sat. Level (1 carrier)	1 carrier	-10	-10	-10	-10	dBm		
Out of band gain (Ref: 0 dB)		± 1 MHz			± 2 MHz			
		Min	Typ	Max	Min	Typ	Max	
Uplink			-60			-70	-75	dB
Downlink			-60			-70	-75	dB
Parameters	Minimum	Typical		Maximum			Units	
Uplink Gain (1 dB step, software configurable)	45	82		90			dB	
Downlink Gain (1 dB step, software configurable)	45	82		90			dB	
In Band Ripple		± 1.5					dB	
ALC window		65					dB	
Uplink Excitability		-104					dBm	
Downlink excitability		-104					dBm	
Noise factor		4					dB	
In/Out impedance		50					Ω	
Return losses				-12			dB	
Group Delay		3					μs	
Power supply AC levels	100	220		240			Vac	
Power consumption		80					W	

## MECHANICAL AND ENVIRONMENTAL SPECIFICATIONS:

RF connectors	N Female	Other options by demand
MTBF	100.000 Hours	
Temperature range	-35°C to 55° C	IP 65
Package Dimensions (mm)	WxHxD	400x420x220 mm

<sup>1</sup> Factory defaults. Manufactured under ISO 9002.

