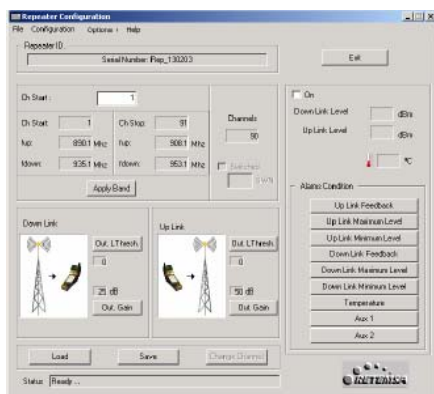




**MODEL GSMR7H-XXX
GSM 900 MHz / 23 dBm**



[Quick deployment and cost effective coverage indoor applications.](#)



[PC repeater configuration software](#)

PRODUCT DESCRIPTION

RETEMOSA's model **GSMR7H-XXX** repeater is a bidirectional superheterodyne receiver / transmitter that has been designed to provide coverage for indoor applications: buildings, parkings and tunnels

This model has the advantage to cover the necessities of coverage in low and medium power with excellent rates for network planning.

RETEMOSA also has other Standard interfaces like optic fiber or radiating cable to specific applications

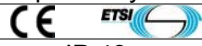
PRODUCT FEATURES

- **Band Selective repeater** for GSM 900 MHz systems.
- Full-duplex configuration based on heterodyne structure over 70 MHz
- Output power up to **23 dBm** / 1 carrier.
- Bandwidth customizable
- Gain from 35 to 82 dB, adjustable in steps of 1 dB with a Windows ® compatible software.
- Dynamic margins 75 dB
- Automatic Level Control loops to suppress unwanted disturbing radio signals
- Remotely controlled model (GSMR7H-XXXT) can be managing with a standard computer and a modem (9600 bauds).
- Windows interface for configuration all parameters: uplink and downlink gain, ALC loops, channels, alarms reports, monitoring in / out levels.
- Complete system: fixed base plus control software includes.

ELECTRICAL SPECIFICATIONS AT Ta=25°C:

Parameters	Test Conditions	Downlink			Uplink			Units
Work Band	At -3 dB	935-960			890-915			MHz
BandWidth	At -3 dB	Customizable			Customizable			MHz
Parameters	Test Conditions	Min	Typ	Max	Min	Typ	Max	Units
OutPut power (1 carrier)	1dB compression		+23	+24		+23	+24	dBm
OutPut power (2 carriers)	1 dB ompression		+20			+20		dBm
IP3	Two equal carriers		42	42.5		42	42.5	dBm
Input sat. Level (1 carrier)	1 carrier		-10	0		-10	0	dBm
Out of band gain (Ref: 0 dB)		± 1 MHz			± 2 MHz			
		Min	Typ	Max	Min	Typ	Max	
Uplink			-15			-45	-48	dB
Downlink			-15			-45	-48	dB
Parameters	Minimum	Typical		Maximum			Units	
Uplink Gain (1 dB step, software configurable)	35	70		82			dB	
Downlink Gain (1 dB step, software configurable)	35	70		82			dB	
In Band Ripple	± 1	± 1.5		± W2			dB	
ALC window	30	35		40			dB	
Uplink Excitability	-104	-104		-100			dBm	
Downlink excitability	-101	-100		-98			dBm	
Noise factor		4					dB	
In/Out impedance	47	50					Ω	
Return losses	-11	-12					dB	
Group Delay	3	3.5		4			μs	
Power supply AC levels	100	220		240			Vac	
Power consumption		30					W	

MECHANICAL AND ENVIROMENTAL SPECIFICATIONS:

RF connectors	N Female	Other options by demand
MTBF	100.000 Hours	
Temperature range	-35°C to 55° C	IP 43
Package Dimensions (mm)	WxHxD	250x140X95mm (installed over fixed base)

¹ Factory defaults. Manufactured under ISO 9002.

