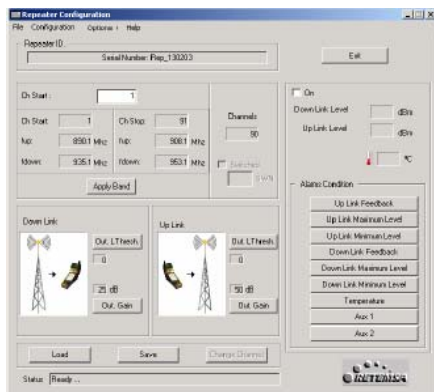




**MODEL UMSR23H-XXX**  
**3G / 20 dBm**



[Quick deployment and cost effective coverage indoor applications.](#)



[PC repeater configuration software](#)

### PRODUCT DESCRIPTION

RETEMSEA's model **UMSR23H-XXX** repeater is a bidirectional superheterodyne receiver / transmitter that has been designed to provide coverage for indoor applications: buildings, parkings and tunnels

This model has the advantage to cover the necessities of coverage in low and medium power with excellent rates for network planning.

RETEMSEA also has other Standard interfaces like optic fiber or radiating cable to specific applications

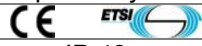
### PRODUCT FEATURES

- **Channeled repeater** for UMTS (3G) systems.
- Full-duplex configuration based on heterodyne structure over 230 MHz
- Output power up to **20 dBm** / 1 channel
- Bandwidth 5 or 15 MHz.
- Gain from 45 to 90 dB, adjustable in steps of 1 dB with a Windows ® compatible software.
- Dynamic margins 65 Db
- Full **3GPP TS 25.143 V 6.0.0** – COMPLIANT
- Automatic Level Control loops to suppress unwanted disturbing radio signals
- Remotely controlled model can be managing with a standard computer and a modem (9600 bauds).
- Windows interface for configuration all parameters: uplink and downlink gain, ALC loops, channels, alarms reports. monitoring in / out levels.

### ELECTRICAL SPECIFICATIONS AT Ta=25°C:

Parameters	Test Conditions	Downlink			Uplink			Units
Work Band	At -3 dB	2170-2110			1920-1980			MHz
BandWidth	At -3 dB	5 or 15			5 or 15			KHz
Parameters	Test Conditions	1 CH			1 CH			Units
OutPut power	1dB compression	+20			+20			dBm
Input sat. Level (1 carrier)	1 carrier	-10			-10			dBm
Out of band gain (Ref: 0 dB)		± 1 MHz			± 2 MHz			
		Min	Typ	Max	Min	Typ	Max	
Uplink			-60			-70	-75	dB
Downlink			-60			-70	-75	dB
Parameters	Minimum	Typical		Maximum			Units	
Uplink Gain (1 dB step, software configurable)	45	80		82			dB	
Downlink Gain (1 dB step, software configurable)	45	80		82			dB	
In Band Ripple		± 1.5					dB	
ALC window		65					dB	
Uplink Excitability		-104					dBm	
Downlink excitability		-104					dBm	
Noise factor		4					dB	
In/Out impedance		50					Ω	
Return losses				-12			dB	
Group Delay		3					μs	
Power supply AC levels	100	220		240			Vac	
Power consumption		30					W	

### MECHANICAL AND ENVIROMENTAL SPECIFICATIONS:

RF connectors	N Female	Other options by demand
MTBF	100.000 Hours	
Temperature range	-35°C to 55° C	IP 43
Package Dimensions (mm)	WxHxD	250x140X95mm (installed over fixed base)

<sup>1</sup> Factory defaults. Manufactured under ISO 9002.

