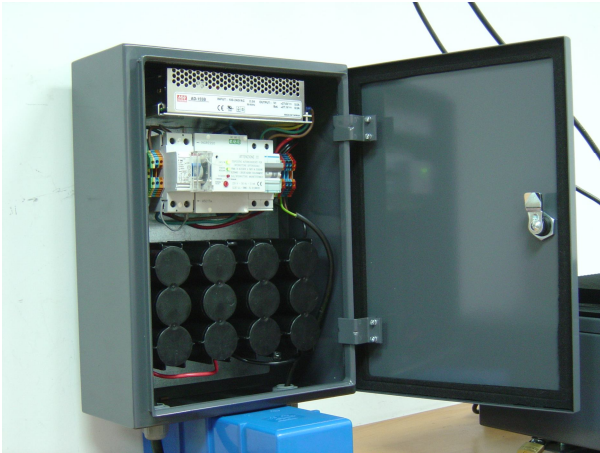


PRODUCT DESCRIPTION



RETEMSA has developed the **AC+Back-up Battery Power Pack** as a system for safely powering its SolBoost repeaters, when AC power is required.

This Power Pack includes AC/DC converter, a set of protecting circuit breakers and a set of back-up batteries.

The **AC+Battery Pack** protects the repeater against common failures in the AC supply, such as AC power blackouts or transient under and over voltage conditions.

SolBoost remote monitoring functionalities can be used to get information about the status of the power supply unit, allowing to promptly taking the necessary actions.

The **AC+Battery Pack** makes use of the same cabinet than SolBoost repeaters. Thus, it can be installed by using the same fixing solutions. It is a kiln-dry painted steel enclosure. It is possible to choose its color (RAL). Equipped with protected passing holes for cables. IP 55 compliant.

PRODUCT FEATURES

AC / DC CONVERTER	
AC input	88 to 264 V _{AC}
DC output (to SolBoost)	24 V _{DC} , 5,5 A
DC output (for battery charge)	27,1 V _{DC} , 0,5 A
POWER CONTROL CIRCUIT BREAKER	
Maximum current	16 A
DIFFERENTIAL CIRCUIT BREAKER	
Type	Bi-polar, Auto Re-connectable
Maximum current	40 A
Maximum differential current	30 mA
BATTERIES	
Type	Sealed, high performance (CYCLON)
Voltage	24 V (4 sets of 6 V)
Capacity	8 A.h
CABINET	
IP 55, SolBoost-type cabinet	300 x 400 x 195 mm (W x H x D) (including standard fixing set)